

FUNDERMAX®

m.look
A2 Quality



Range of Decors

m.look architectural rainscreen cladding panel (A2)

Release September 2020

exterior

**for
people
who
create**

m.look **A2 Quality** with HPL-surface

A non-combustible panel for architecturally appealing solutions

m.look

m.look opens a door into a world full of visual highlights and contemporary architecture. A non-combustible material that knows no architectural limits, without height restrictions and **A2-s1,d0** classification.

The design of visionary buildings is an exciting challenge that requires ingenuity and experience. Impressive buildings deserve smart materials, which enhance the value of these special places. m.look is just such a material.

Innovative

Through the combination of exciting and innovative new materials, and dedication to continuous developments, not to mention FunderMax's proven production technology, we've created a lightweight and mechanically stable panel.

m.look is an architectural facade panel with an extremely durable, glass fibre reinforced non-combustible core (predominantly mineral) and a highly weather-proof, decorative and patented HPL-surface, whose technology has been used successfully across numerous Funder-

Max products, for many years. m.look is designed to withstand adverse weather and environmental conditions.

The innovative HPL production process results in a decorative HPL surface with properties tested according to EN438-2.



PROJECT: MAX & MORITZ, ERDING GERMANY
DESIGN: KUTZSCHENBACH INGENIEURBÜRO FÜR BAUSCHÄDEN UND BAUWERKSERHALT

New freedom for creativity

m.look (A2) allows you to implement architectural design ideas beyond 20 metres in height and convincingly brings your creative designs to life.

Previously only limited materials with limited design potential were available. Today, m.look opens up entirely new visual worlds.

m.look architectural-rainscreen-panel with HPL-surface

- Extensive design/decor range (Uni, Nature, Material)
- **Large format/economical**
- UV and weather resistant (incl. hail test)
- **Application in combination with Max Compact Exterior**
- **Increased scratch resistance**
- **High impact protection**
- **High breaking strength on corners and edges**
- Permanent anti-graffiti protection
- Certificates and approvals for commercial use
- Longevity
- **Large distances between fixings, less installation effort**
- Made using the HPL process
- No edge sealing necessary
- Decades of experience



PROJECT: THE TIDES, WARSAW POLAND
DESIGN: ARCHITECTS KURYLOWICZ & ASSOCIATES

An A2 material that combines the best of both worlds

PANEL SIZE

Length max. 3500 mm
Width max. 1330 mm

The panels are delivered cut to customer specifications.

THICKNESSES FOR OUTDOOR USE

7 mm
for exterior facade applications

9 mm
for balconies, railings and stairway balustrade panels

THICKNESSES FOR INDOOR USE

8 mm
as architectural wall panel system.
Custom thicknesses of 7, 9, 10 and 12 mm are available upon request. Please consult FunderMax directly.

9 mm, 12 mm
for railings and stairway balustrade panels.
Custom applications are available upon request.

SURFACE

NT (for outdoor applications)
FH (for indoor applications)

PHYSICAL PROPERTIES

Specific weight 1.8 g/cm³
Fulfills requirements in accordance with EN 438 (outdoor use) for:
Climate resistance, UV and weather resistance and surface resistance.
You can find more technical information in the «m.look Technical Information» brochure.

INSTALLATION AND MACHINING (OUTDOOR USE)

Visibly riveted or screwed to a metal substructure with a mounting distance of up to 800 mm / 800 mm.
Like with HPL compact panels, machining requires diamond-tipped tools.

APPLICATION AREAS

Skyscrapers, shopping malls, train stations, airports, hospitals, public buildings or living areas must provide people with security and protection.

Planning these structures is a delightful challenge that demands ingenuity and experience. m.look meets those challenges, breaks new ground and allows visionary solutions.



PROJECT: MILANEO, STUTTGART GERMANY
DESIGN: RKW ARCHITEKTUR U STÄDTEBAU

APPROVALS

Europe:

Building material classification A2-s1, d0 according to EN 13501-1

Germany:

Allgemeine bauaufsichtliche Zulassung vom Deutschen Institut für Bautechnik Berlin.

Approval number Z-10.3-711

(Exterior - Outdoor use)

Approval number Z-56.426-1017

(Interior - Indoor use)

Austria:

Tested to ÖNORM B3800-5 for vertical/ sloping facades and soffits.

Switzerland:

Building material classification A2-s1, d0 according to EN 13501-1. Signed in the fire register.

Asia:

Building material classification A2-s1, d0, t1

USA/Canada:

ASTM E136 passed

ASTM E84 Class A



REACTION TO FIRE
EN 13501.1
A2-s1, d0



SCRATCH RESISTANCE
ABRASION
EN 438-2/25



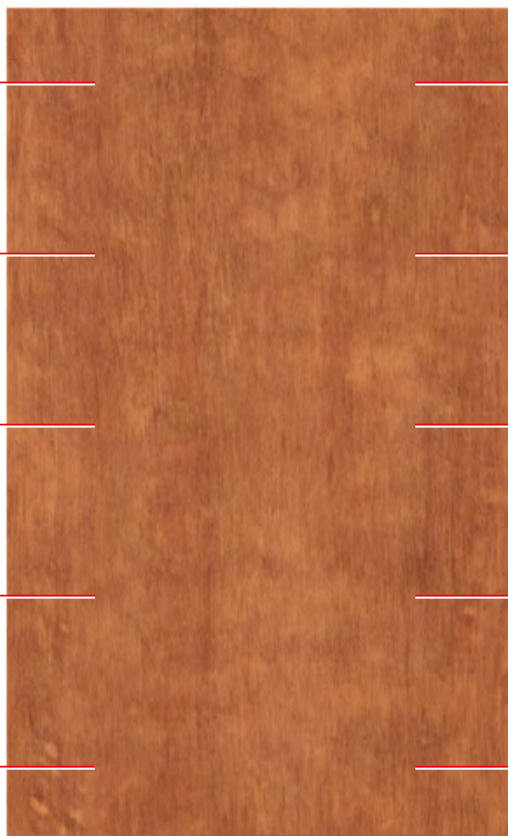
LIGHT FASTNESS
EN 438-2/29



IMPACT RESISTANCE
EN 438-2/21



USE OF BOTH SIDES



EASY TO CLEAN



LONGEVITY



CHEMICAL
RESISTANCE



LOW THICKNESS
SWELLING
EN 317



DIMENSIONAL
CHANGE
ETAG034



Architecture Line Pure Colour

m.look is available in a large variety of colours and textures, opening up new possibilities for a wide range of applications and enabling you to skilfully bring your creative ideas to life.

COLOUR DEVIATIONS TO ORIGINAL DECORS ARE SUBJECT TO THE PRINTING PROCESS.

						Architecture Line
5000 WHITE AVALANCHE	5001 ICE SILVER	5002 SMOKE	5003 CHARCOAL GREY	5004 LAVA ROCK	5005 PURE BLACK	
						Pure Colour
5110 GINGER	5113 CURCUMA	5111 CURRY	5032 CINNAMON	5031 HAZEL		
						Pure Colour
5030 TRUFFLE			5091 AFRICAN CLAY			
						Pure Colour
5090 DEEP OCEAN	5092 BLUE MOUNTAIN	5070 POSEIDON		5071 NEPTUN		

Nature

Architecture means offering new perspectives and making a powerful impression. m.look draws upon a wide colour spectrum to capture exactly the right architectural message in an independent, unique and unrepeatable form, in the building material class A2-s1, d0.

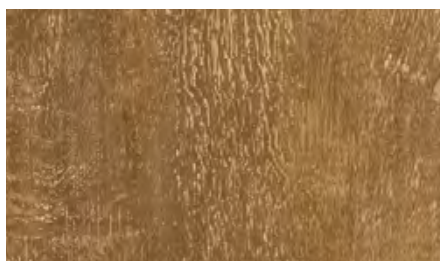


PROJECT: STATION ČESKÁ LÍPA, CZECH REPUBLIC
DESIGN: SUDOP PRAHA A. S.

Nature



0125 NATURAL OAK

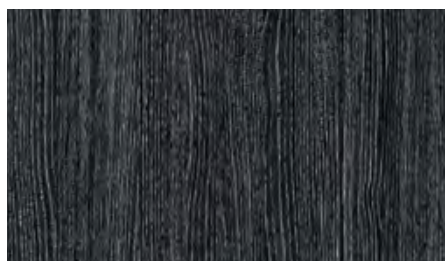


0928 GOLD COAST

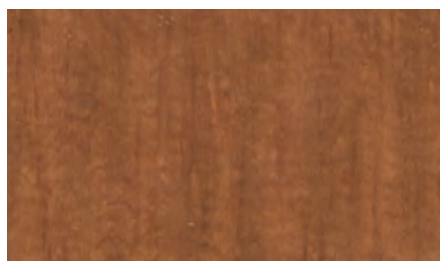


0931 AKRO ALMOND

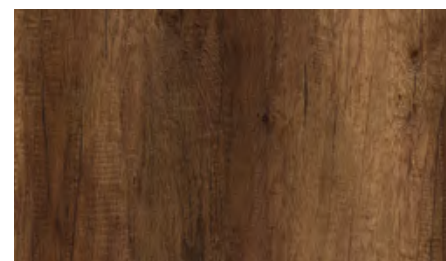
Nature



0926 JAZZ

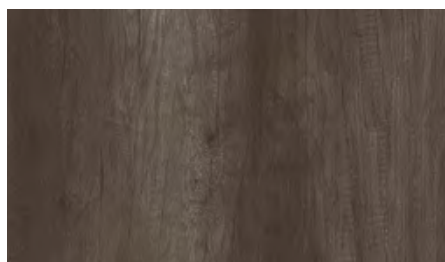


0161 LIGHT AFRO

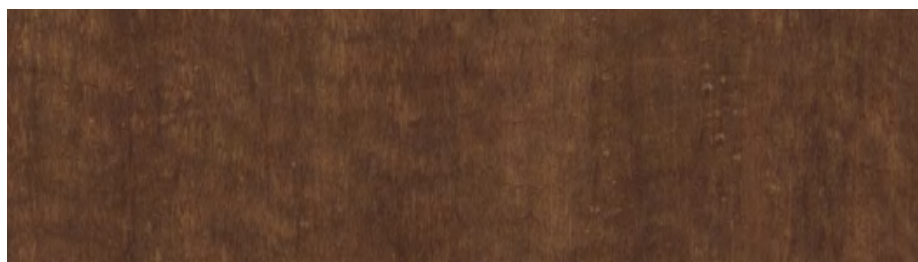


5173 BARRIQUE OAK

Nature



5172 MARSHLAND OAK



0932 AKRO TERRA

Material



0156 AFRO PATINA



0798 TAMBORA



5150 YELLOWSTONE



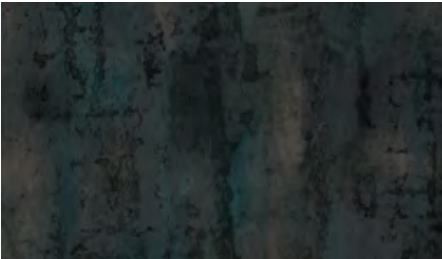
0794 PATINA BRONZE



0497 STONEHENGE



0793 PATINA TIN



0386 BLUES



5152 BLACK SLATE

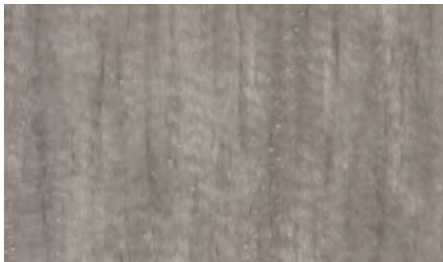
Material

Material

Material

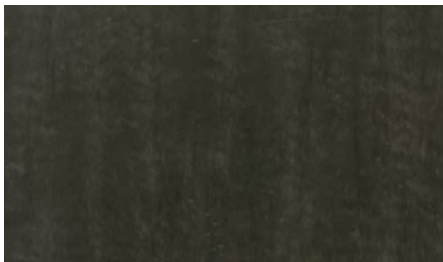
COLOUR DEVIATIONS TO ORIGINAL DECORS ARE SUBJECT TO THE PRINTING PROCESS.

Material



0158 AFRO GREY

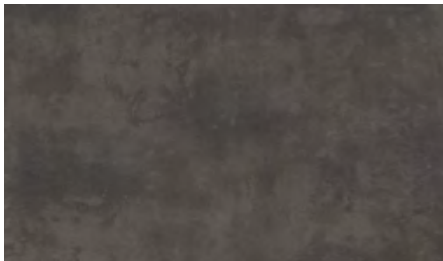
Material



0159 AFRO BLACK



Material



0027 PRADO AGATE GREY

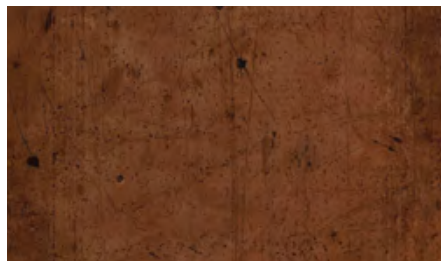


0026 PRADO ALU GREY

Material

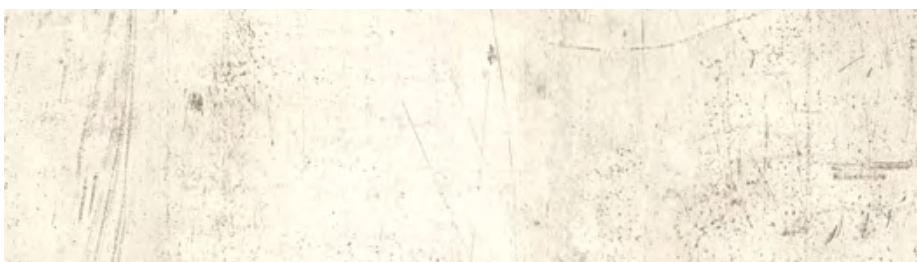


0427 SKYLINE

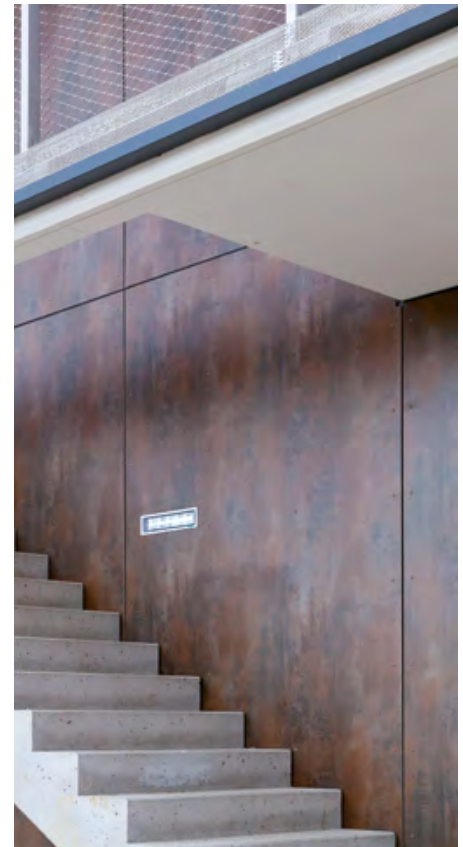


0429 CORRO

Material

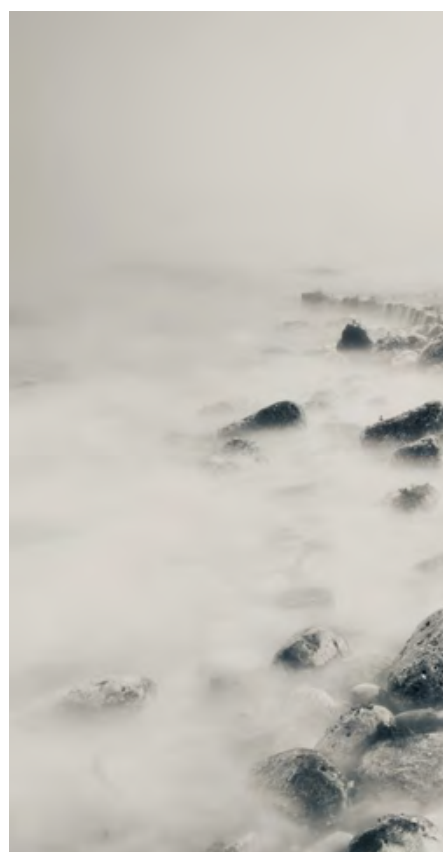
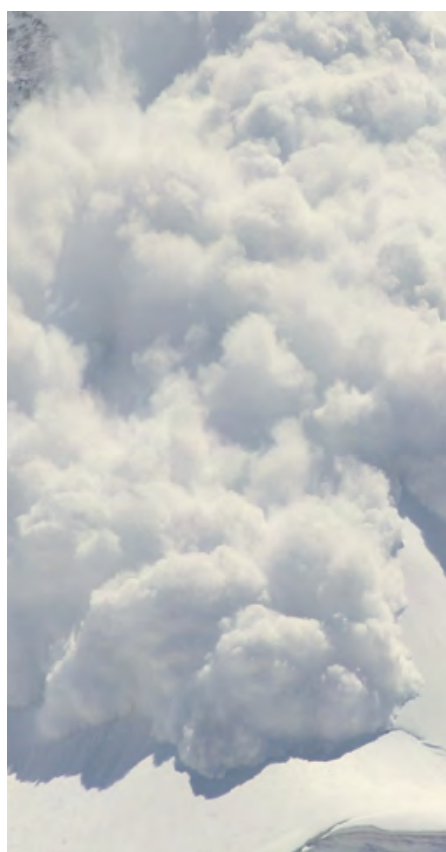


0426 LOFT



PROJECT: HIGH SCHOOL LIEFERING AUSTRIA
 DESIGN: ARCHITEKT DI JOHANNES SCHALLHAMMER

Architecture Line



5000 White Avalanche

The elemental power of winter creates an overwhelming impression.

5001 Ice Silver

The glitter of ice turns out to be a fascinating mirror of reality.

5002 Smoke

A stylish gray veil as a visual trademark.

COLOUR DEVIATIONS TO ORIGINAL DECORS ARE SUBJECT TO THE PRINTING PROCESS.



5003 Charcoal Grey

A hue born of ancient Earth, with the special appearance of raw coal.



5004 Lava Rock

The bizarre color creation opens the door to a fascinating world in the depths of the earth.



5005 Pure Black

Reduction to the essentials. A strong appearance as an allround colour for almost every application.

Pure Colour



5110 Ginger

With just the lightest shade of ginger, it is almost white, yet clearly its own distinctive colour.

5113 Curcuma

Beautiful and highly visible in pure culture. Always an eye catcher.

5111 Curry

A wise balance with a bright liveliness and claim to timeless style.

COLOUR DEVIATIONS TO ORIGINAL DECORS ARE SUBJECT TO THE PRINTING PROCESS.



5032 Cinnamon

A colour that you can «smell with your eyes» so to speak. Cinnamon entices you to take sniff.



5031 Hazel

Drawn with pleasure from the paint bucket of nature. A look that blends warmth and taste.



5051 Cayenne

A spicy colour that livens up any object.

Pure Colour



5030 Truffle

A commitment to pleasure.
Only those who appeal to all
the senses, can achieve such
results.

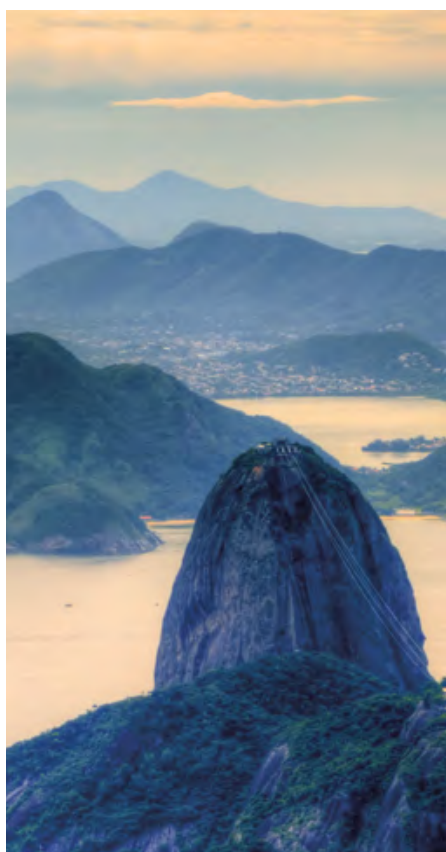
5091 African Clay

Back to basics.
The encounter with earth as
the original element.

5090 Deep Ocean

Inspiration drawn from the
ocean floor gives insight into
a mysterious world.

COLOUR DEVIATIONS TO ORIGINAL DECORS ARE SUBJECT TO THE PRINTING PROCESS.



5092 Blue Mountain

The colour of the setting day, when the last light gently covers the mountain peaks.



5070 Poseidon

As intense as the captivating power of the elemental forces.



5071 Neptun

Where the sea is the most beautiful, it is exactly this colour.

Nature

Whichever colours, shapes and structures man composes, the world around us has invented it in one form or another long before.

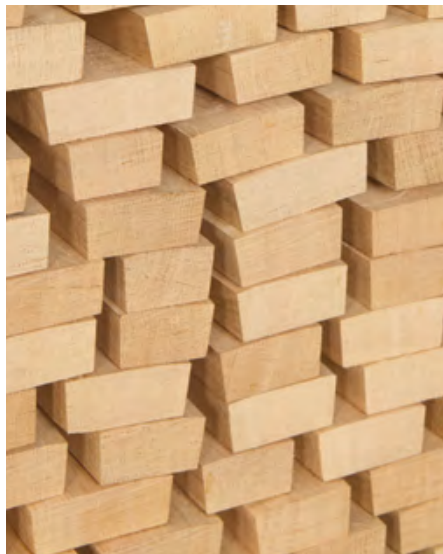
There is so much to discover, often in the smallest detail. Our Nature decors were created through patient observation and deep understanding of nature. This is why they replicate nature so precisely; at the same time playfully and convincingly.

0125 Natural Oak

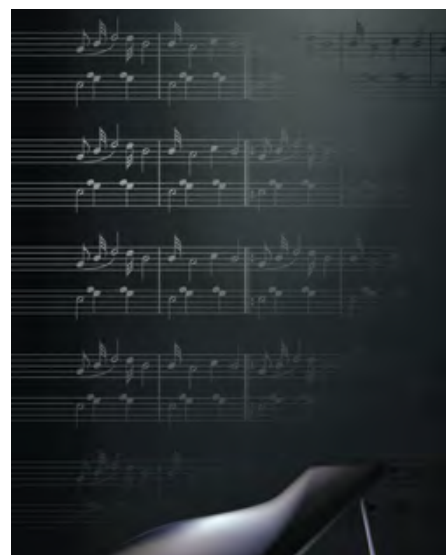
A work of art from the wealth of nature that you are sure to love.

5173 Barrique Oak

Matured for beauty!
The impressive result of experience and style.



COLOUR DEVIATIONS TO ORIGINAL DECORS ARE SUBJECT TO THE PRINTING PROCESS.



Nature

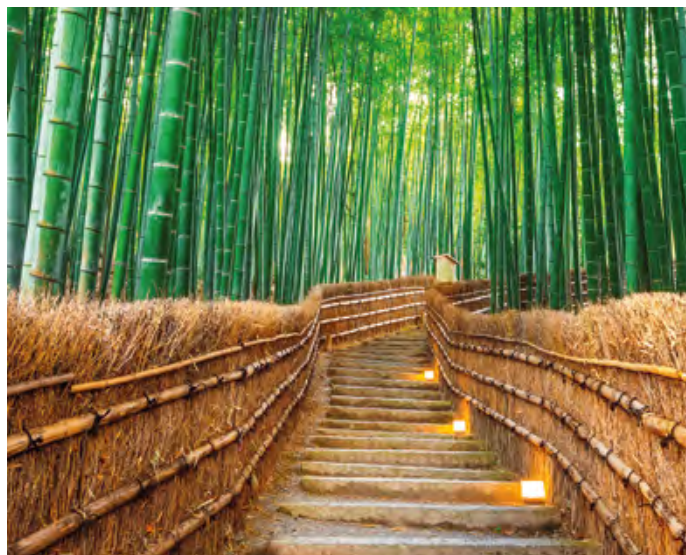
NEW

0931 Akro Almond

The interplay of light and dark creates exquisite shades.

0161 Light Afro

The design in the look of hot desert sand allows the viewer to feel the distance.



COLOUR DEVIATIONS TO ORIGINAL DECORS ARE SUBJECT TO THE PRINTING PROCESS.

NEW

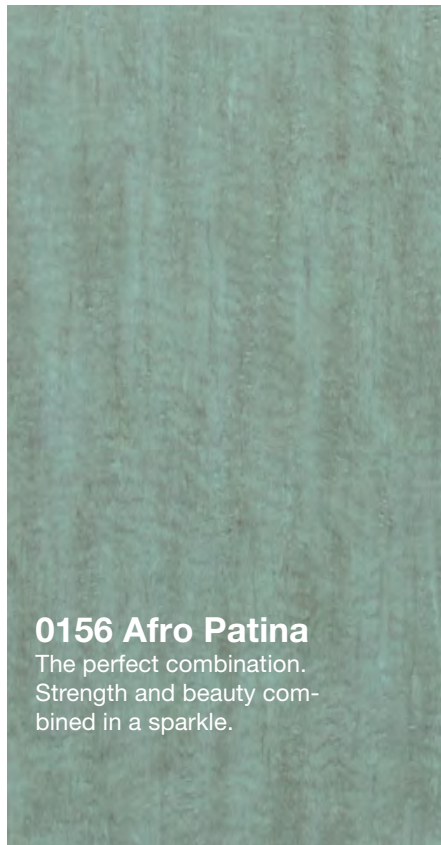
0932 Akro Terra

Earthy and grounded.
Power and passion combine.



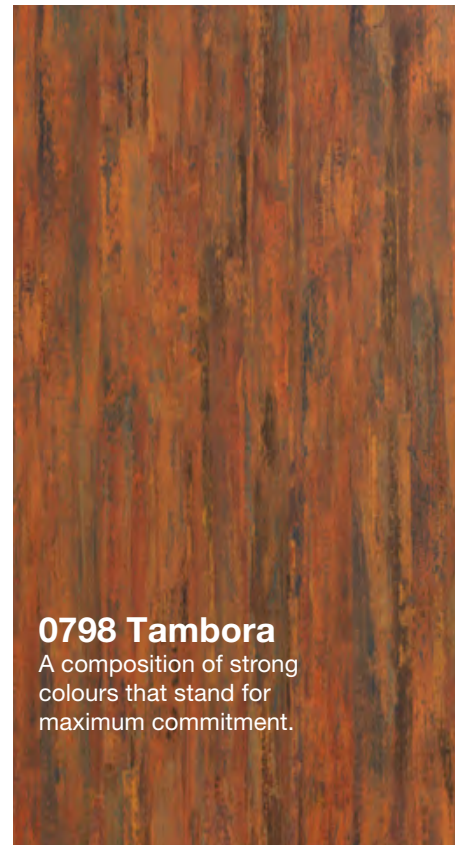
Material

Our unique creations reflect the industrial heritage of our material decors. But it would not be FunderMax had we not added another dimension. Through cleverly chosen and carefully composed colour variations, each decor creates an individual scenario. This gives each individual decor unprecedented depth and visual fascination - with elegance and wow effects.



0156 Afro Patina

The perfect combination.
Strength and beauty combined in a sparkle.



0798 Tambora

A composition of strong colours that stand for maximum commitment.



COLOUR DEVIATIONS TO ORIGINAL DECORS ARE SUBJECT TO THE PRINTING PROCESS.

NEW

0793 Patina Tin

Metallic aesthetic delicately interspersed with subtle shimmer.

NEW

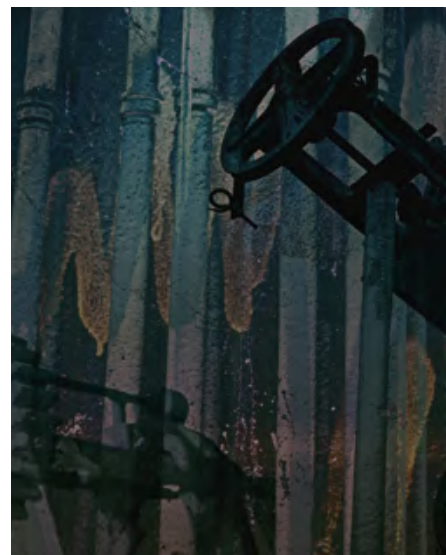
0794 Patina Bronze

This design brings strength and style together.

NEW

0386 Blues

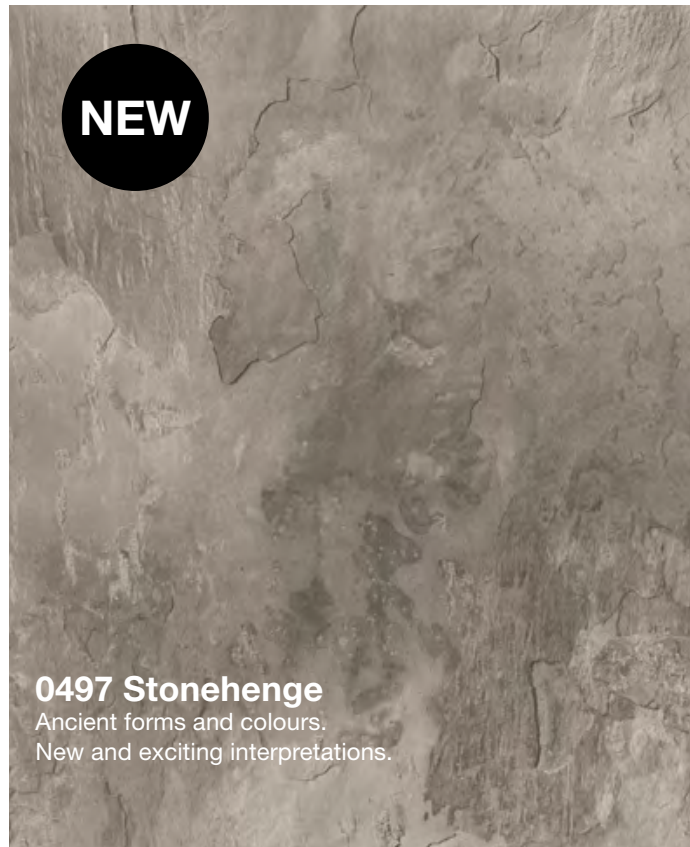
The fusion of deep traditional colours.



Material

Decors that captivate with their simplicity and understatement are captured here. Designs dominated by clarity with a persuasive power that appeals to every one of us.

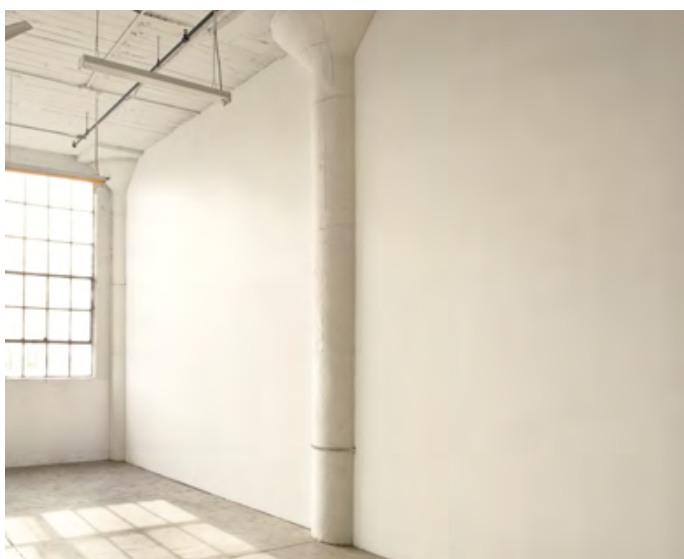
Pure, natural elements; canyons in an infinite landscape, rock formations of overwhelming power and grandeur: all this and more oozes from these decors. They strike a chord like no other.



COLOUR DEVIATIONS TO ORIGINAL DECORS ARE SUBJECT TO THE PRINTING PROCESS.



Material



0426 Loft

A character full of breadth and freedom. Lively yet reserved.

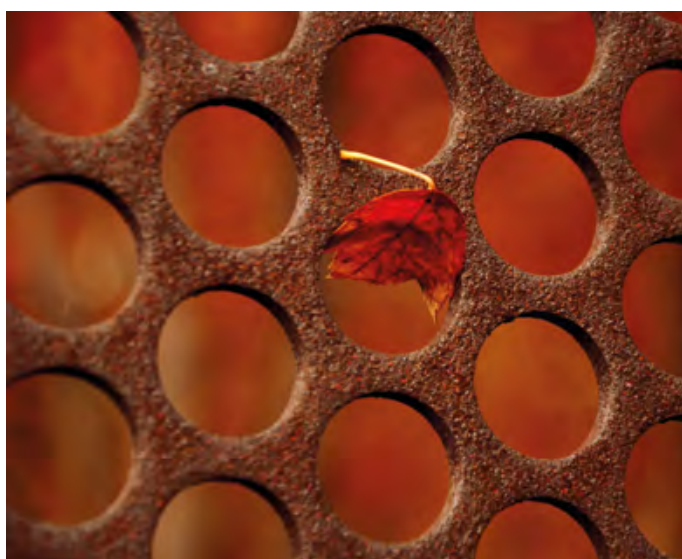
NEW

0427 Skyline

The concrete look is taken to its highest form here and presents the beauty of the underappreciated.

NEW

COLOUR DEVIATIONS TO ORIGINAL DECORS ARE SUBJECT TO THE PRINTING PROCESS.



0429 Corro

The interesting form and colour
of erosion - beautifully captured.

NEW

Material

NEW

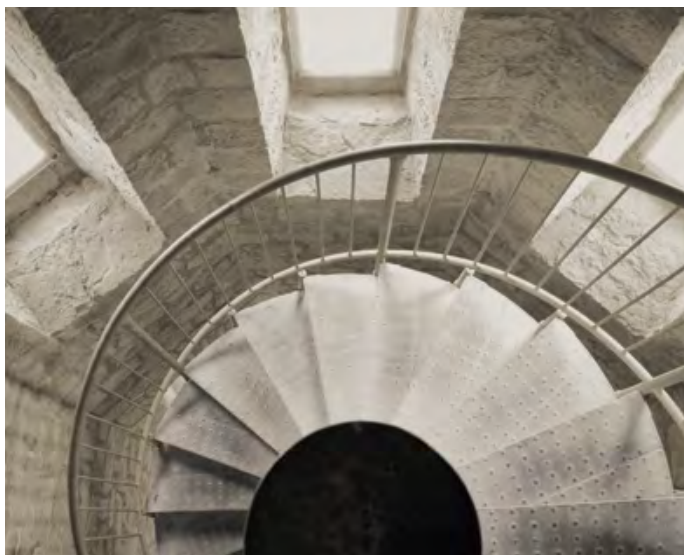
0026 Prado Alu Grey

A spectacular composition in grey that affords boundless spaces as far as the eye can see.

NEW

0027 Prado Agate Grey

Harmonious surface, without restriction.



COLOUR DEVIATIONS TO ORIGINAL DECORS ARE SUBJECT TO THE PRINTING PROCESS.



FUNDERMAX DEUTSCHLAND GMBH
Industriestrasse 1
D-92442 Wackersdorf
infoGermany@fundermax.biz
www.fundermax.de

FUNDERMAX FRANCE SARL
3 Cours Albert Thomas
F-69003 Lyon
Tel.: +33 (0) 4 78 68 28 31
Fax: +33 (0) 4 78 85 18 56
infoFrance@fundermax.biz
www.fundermax.fr

FUNDERMAX INDIA PVT. LTD.
Sy. No. 7, Honnenahalli Village
Bengaluru-Doddballapur Highway Road
Yelahanka Hobli, Bangalore North Taluk
IND-560064 Bangalore
Tel.: +96113 99211
officeIndia@fundermax.biz
www.fundermax.in

FUNDERMAX ITALIA S.R.L.
Viale Venezia 22
I-33052 Cervignano del Friuli
infoItaly@fundermax.biz
www.fundermax.it

FUNDERMAX NORTH AMERICA, INC.
9401-P Southern Pine Blvd.
US-Charlotte, NC 28273
Tel.: +1 980 299 0035
Fax: +1 704 280 8301
office.america@fundermax.biz
www.fundermax.us

FUNDERMAX POLSKA SP. Z O.O.
ul. Rybitwy 12
PL-30722 Kraków
Tel.: +48 (0) 12 65 34 528
Fax: +48 (0) 12 65 70 545
infoPoland@fundermax.biz

FUNDERMAX RUSSIA SHOW:ROOM
of.203, bld.2, 10, Nizhnyaya
Syromyatnicheskaya str.,
RU-Moscow, 105120
Tel.: +7 (499)130-3094
fundermax.ru@fundermax.biz
www.fundermax.ru

FUNDERMAX SWISS AG
Industriestrasse 38
CH-5314 Kleindöttingen
Tel.: +41 (0) 56-268 83 11
Fax: +41 (0) 56-268 83 10
infoswiss@fundermax.biz
www.fundermax.ch

FunderMax GmbH

Klagenfurter Straße 87-89, A-9300 St. Veit/Glan
T +43 (0) 5/9494-0, F +43 (0) 5/9494-4200
office@fundermax.at, www.fundermax.at