

# MIRA X SELVA

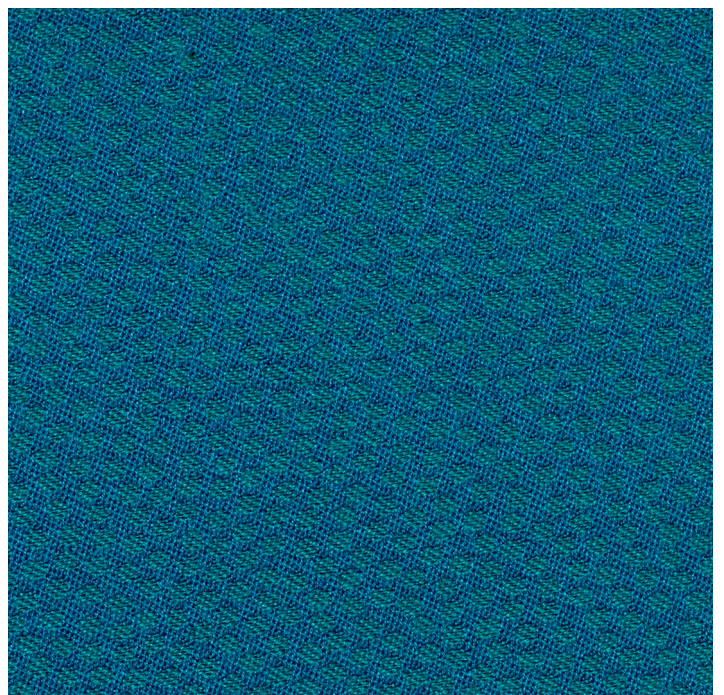
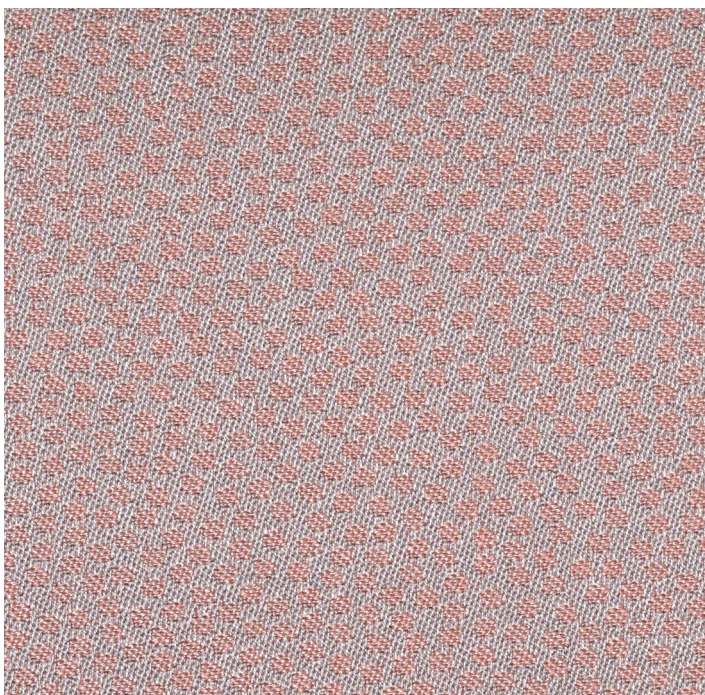
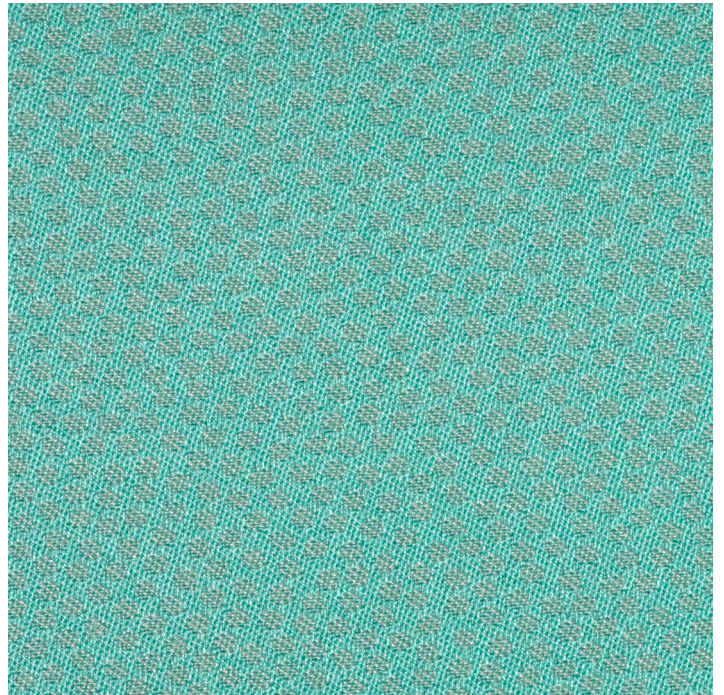
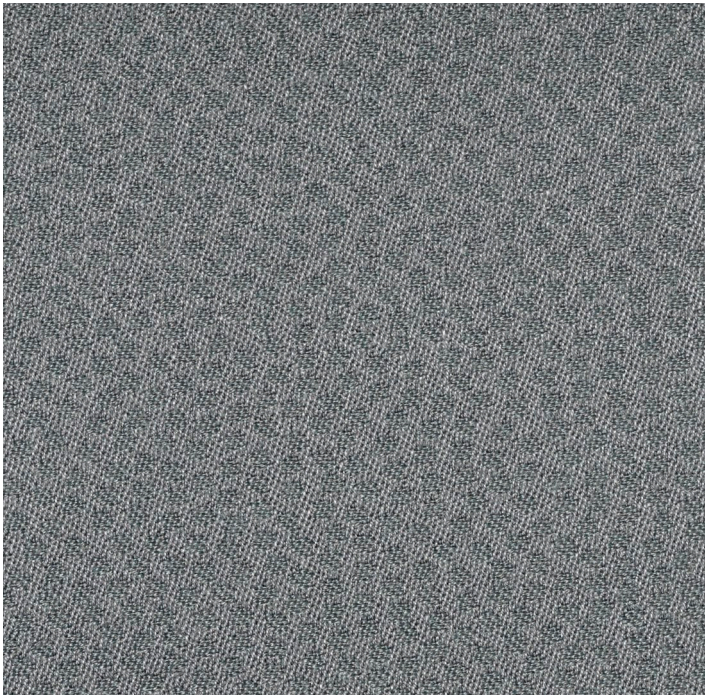
**tisca tiara**  
textile  passion



# MIRA X SELVA

MIRA X SELVA - 6426

Dieser dekorative Vorhangstoff mit dem feinen Punktdessin wurde in Jacquardtechnik gewoben. Das Spiel der Punkte, farblich Ton in Ton gehalten und der Gegensatz von Matt und Glanz verleiht dem Artikel eine bewegte Optik.





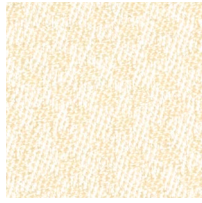
## Colors MIRA X SELVA - 6426



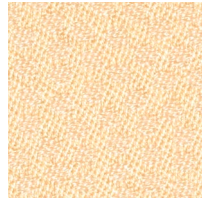
Col\_1



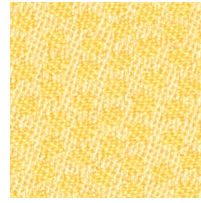
Col\_2



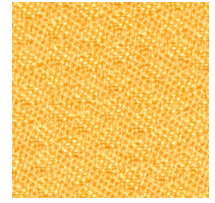
Col\_3



Col\_4



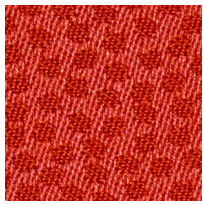
Col\_5



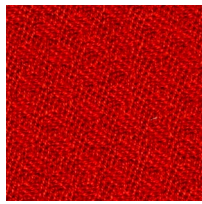
Col\_6



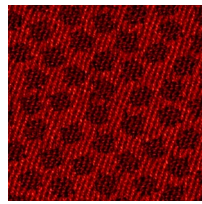
Col\_7



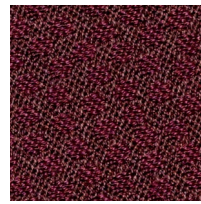
Col\_8



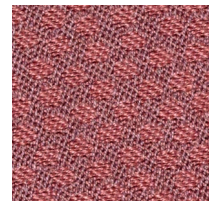
Col\_9



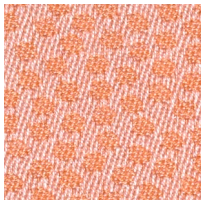
Col\_10



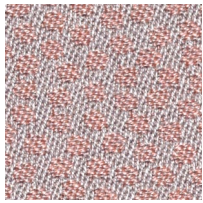
Col\_11



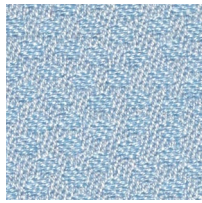
Col\_12



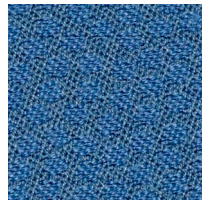
Col\_13



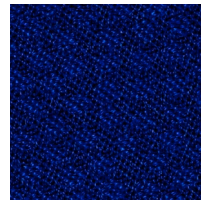
Col\_14



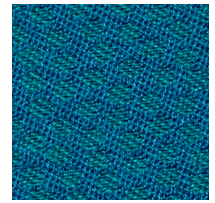
Col\_15



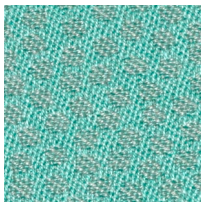
Col\_16



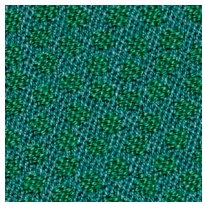
Col\_17



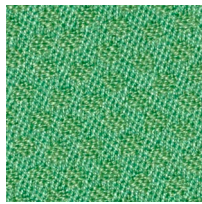
Col\_18



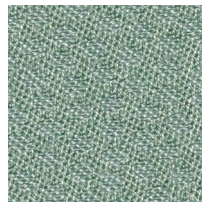
Col\_19



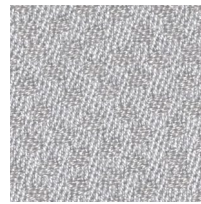
Col\_20



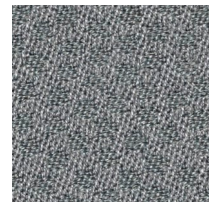
Col\_21



Col\_22



Col\_23

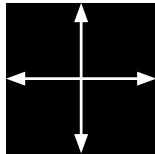


Col\_24



Col\_25

## Technische Daten MIRA X SELVA - 6426



ca. 140 cm



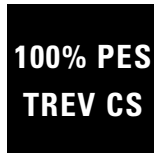
25



ca. 237 g/m<sup>2</sup>



ca. 1%



Dessin	6426
Einsatzbereich	Vorhang, Gardine
Warenbreite	ca. 140 cm
Anzahl Farben	25
Gewicht	ca. 237 g/m <sup>2</sup>
Wascheinsprung	ca. 1 %
Komposition	100% PES TREV CS
Schwerentflammbarkeit	ja
Pflegeanleitung	sh. oben

TISCA TIARA kleidet Lebensräume. Als Komplettanbieter hochwertiger Textilien für Innen- und Aussenräume produzieren wir textile Bodenbeläge, Gardinen, Möbel- und Dekorationsstoffe für den Wohn-, Objekt- und Transportbereich sowie Sportbeläge. In den Produkten von TISCA TIARA stecken nicht nur Wissen und Können, Kompetenz und Erfahrung, sondern ebenso die unstillbare Leidenschaft für unser Tun – TEXTILE PASSION.